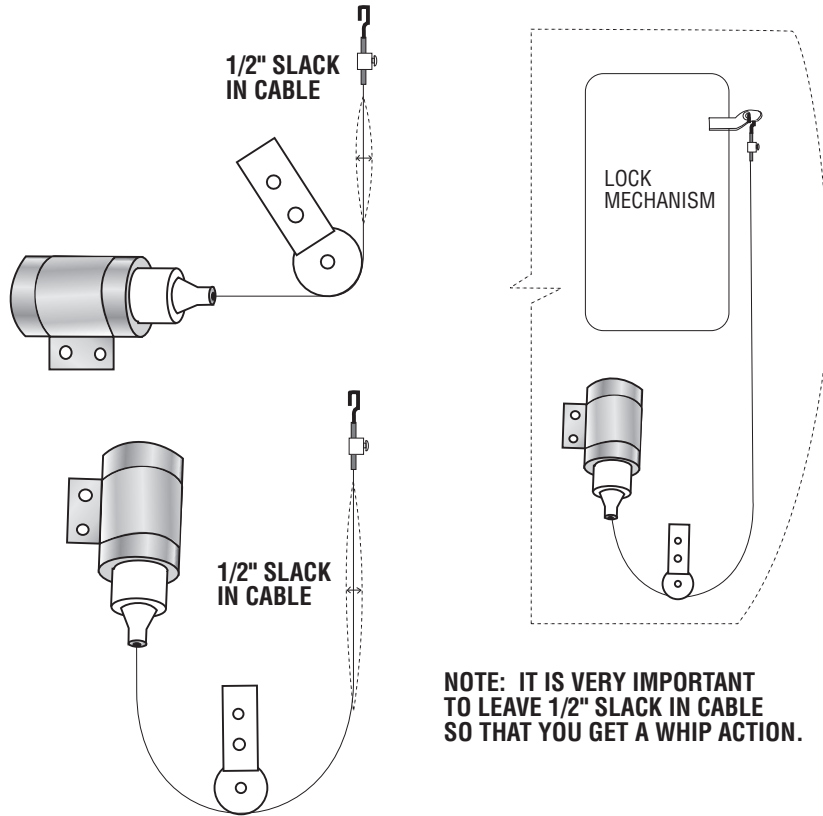
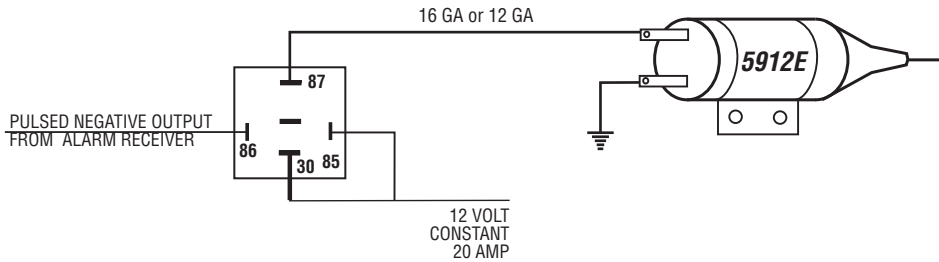


DOOR POP SOLENOID



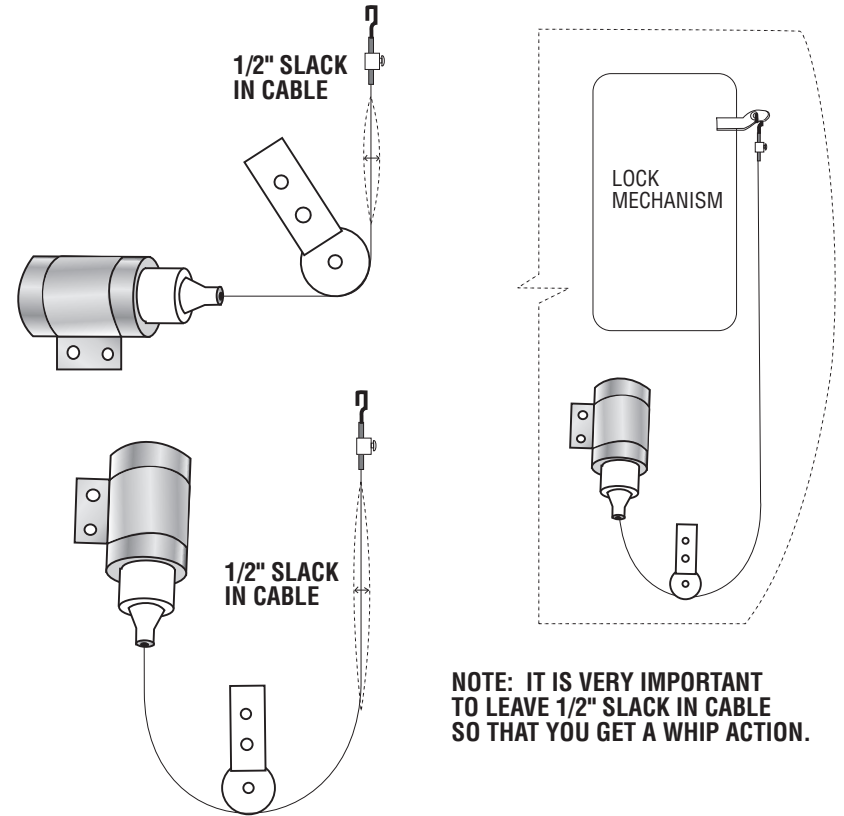
NOTE: IT IS VERY IMPORTANT TO LEAVE 1/2" SLACK IN CABLE SO THAT YOU GET A WHIP ACTION.

WIRING



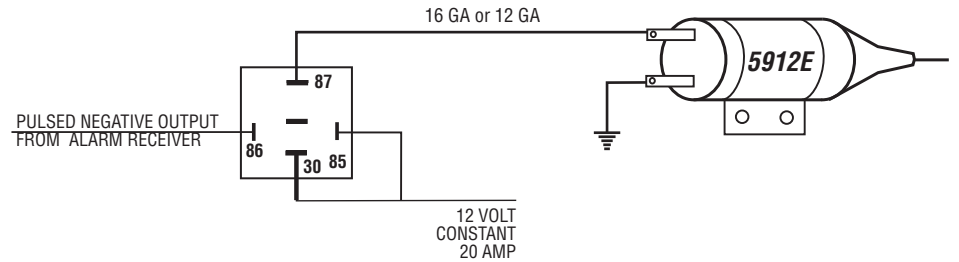
*Technical information and diagrams provided by Accela Electronics is "as is" information. User assumes entire risk and responsibility. Accela Electronics recommends verifying all wire colors and operation before installing product.

DOOR POP SOLENOID



NOTE: IT IS VERY IMPORTANT TO LEAVE 1/2" SLACK IN CABLE SO THAT YOU GET A WHIP ACTION.

WIRING



*Technical information and diagrams provided by Accela Electronics is "as is" information. User assumes entire risk and responsibility. Accela Electronics recommends verifying all wire colors and operation before installing product.