

USER MANUAL



LCDP700VGA

1. Notes

For your safety, do not watch video or operate monitor when driving. Non-professionals do not dismantle the product without permission. Please consult the after-sale service agency or send it to the local service department when product in failure.

Caution: Please install the product in legal position. We disclaim any legal liability due to incorrect installation.

Attention: When in cold weather, there appears dark screen during starting up. The display screen will slowly resume to normal with the increasing temperature after power on.

2. Function and application introduction

2.1. Function:

- (1) VGA input: As a display, connect to the computer VGA interface.
- (2) Touch screen: Used as the mouse directly
- (3) 2 video input: one DVD video input and one camera signal input.
- (4) Reversing function: It can automatically switch to V2 when reversing.
- (5) Built-in speaker: One audio input. (Optional)
- (6) IR transmitter: Input audio signals can be transmitted by IR and be received by IR earphone. (Optional)
- (7) Touch button
- (8) Remote control

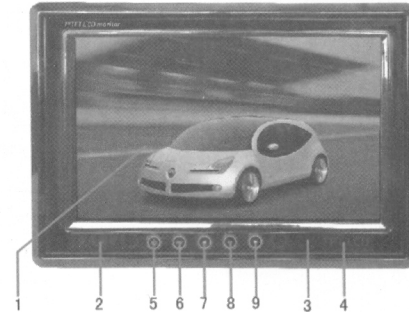
2.2. Application:

Our product with TFT LCD has VGA input, reversing, and AV input functions. Easy to install and connect. Free of radiation, low power consumption and flicker free. With

beautiful and vivid color, Small and exquisite and Suitable for universal car. Bracket angel Adjustable. A good choice for home use.

3. Product introduction

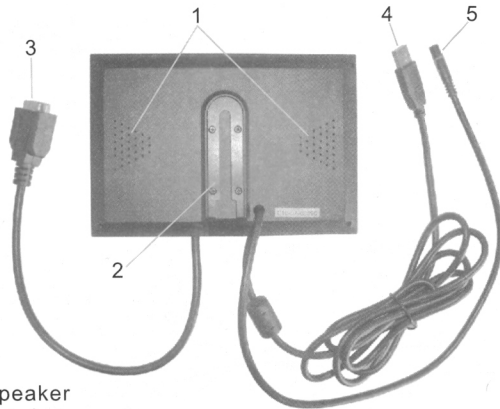
3.1. Front panel introduction:



1. Display area
2. IR transmitter zone
3. Remote control reception zone
4. LOGO position
5. Power key
6. Mode switch key
7. Left direction key: Analog Volume -
8. Menu key
9. Right direction key: Analog Volume+

3. Product introduction

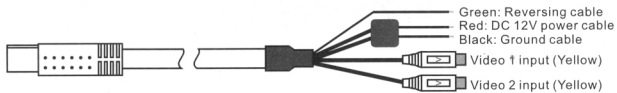
3.2. Back panel introduction:



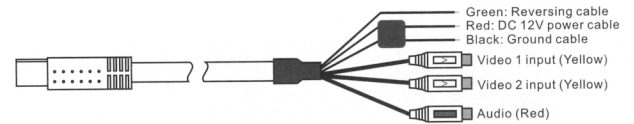
- 1. Speaker
- 2. Bracket
- 3. VGA cable
- 4. USB transfer cable
- 5. Power and signal input cable

3.3. Connections:

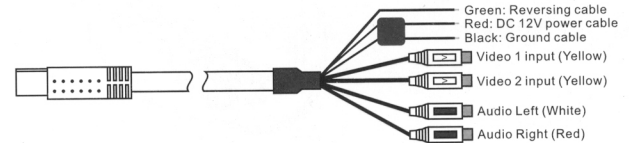
3.3.1. Optional wiring diagram (1)



3.3.2. Optional wiring diagram (2)

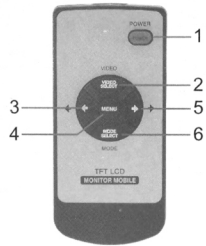


3.3.3. Optional wiring diagram (3)



- (1) Red: DC 12V power cable
- (2) Black: Ground cable
- (3) Green: Reversing cable
- (4) Yellow connector 1: Video 1 input
- (5) Yellow connector 2: Video 2 input
- (6) White connector: Left channel audio input
- (7) Red connector: Right channel audio input

4. Remote controller

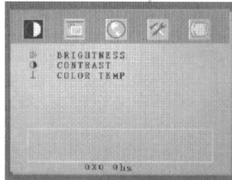


1. :Power off/on available status.
2. :Switch between VGA and AV status.
3. :Analog Volume -
4. :Display menu key
5. :Analog Volume+
6. :Switch the image effect among Standard, Vivid, TINT, Soft, Light.

5. Main function introduction

5.1. VGA

Enter the VGA interface by pressing on remote controller to adjust the parameters of LIGHTNESS, CONTRAST, and COLOR TEMP. (See below figure 1)



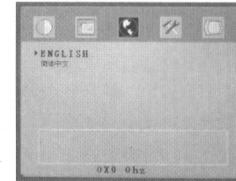
(Figure 1)

Press to enter the VGA interface to adjust the menu options. (See below figure 2)



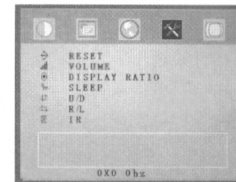
(Figure 2)

press again, to enter the language option interface.(see below figure 3)



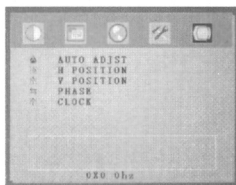
(Figure 3)

Press for the third time, to enter the VGA setup interface. (See below figure 4)



(Figure 4)

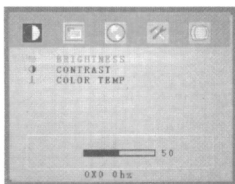
If press **▶** for the fourth time, to enter the image adjustment interface. (See below figure 5)



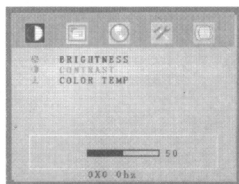
(Figure 5)

If press **MODE SELECT** on remote control, you can select among the BRIGHTNESS, CONTRAST, COLOR TEMP options separately.

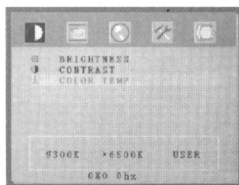
After selecting your desired option, then press **◀** or **▶** to set the parameters. (See below figure 6-7-8)



(Figure 6)



(Figure 7)



(Figure 8)

After you set the parameters, press **M** to exit the present interface. You can also press **MODE SELECT** and **VIDEO SELECT** to browse the Menu, Language, Setup and image adjustment interfaces

under VGA status. Then press **◀** or **▶** to adjust the relevant parameters.

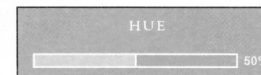
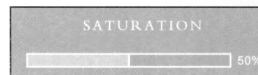
5.2. AV operation introduction

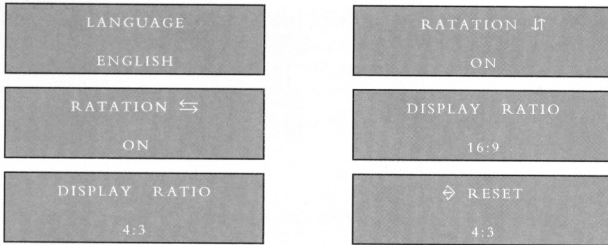
When starting up press **AV** on the panel or press **VIDEO SELECT** on remote control, to enter the AV interface. If trigger cable (green cable) is connected, the monitor can automatically switch to AV mode in any status. The image signal in AV comes from the video input cable.

5.3. Menu setting introduction

Ways of setting the analog parameters can also be as below. you can choose any of the selections among "BRIGHT, CONTRAST, COLOR, TINT, MODE, MODE, TCON, LANGUAGE, RESET" by pressing **MENU** on the remote control or pressing **M** on the panel when the monitor is in AV mode.

Then press **◀** key or **▶** key on the panel or press **◀** or **▶** on remote control to set specific parameters.

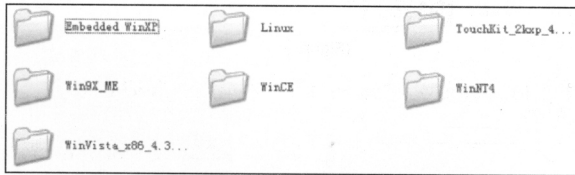




Click driver program file TouchKit_2kxp_4.3.2.2608 (see figure 11)

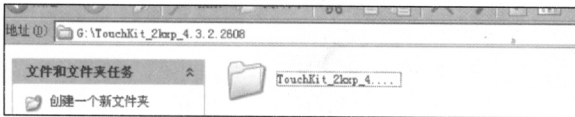
5.4. Touch driver installation instruction

- (1) Please insert the CD driver into computer driver.
- (2) Click the driver of the CD. (See figure 9)

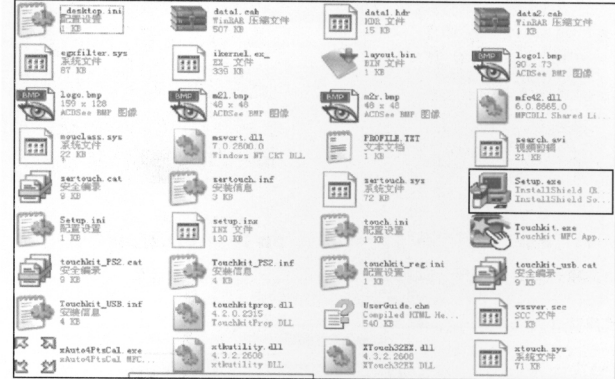


(Figure 9)

(3)The user chooses the suitable driver programs according to computer operation version. Eg. The driver program TouchKit_2kxp_4.3.2.2608 is applied to Windows XP operating system. (See figure 10)

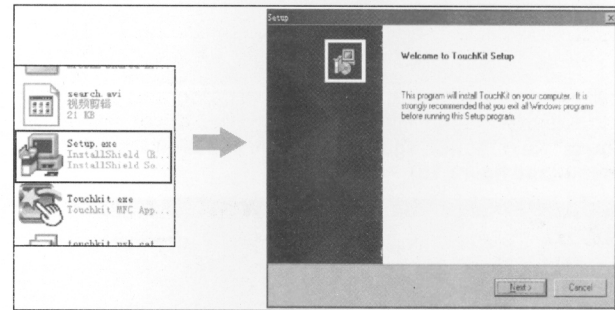


(Figure 10)



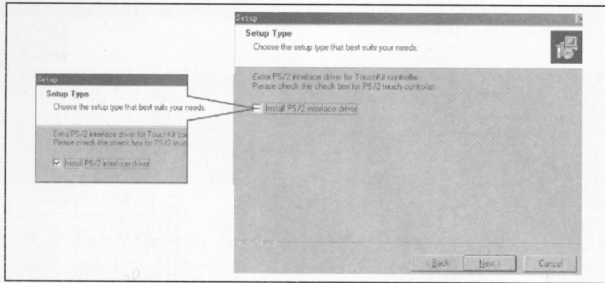
(Figure 11)

(4) Click file "Setup.exe" to enter USB installation interface (see figure 12)

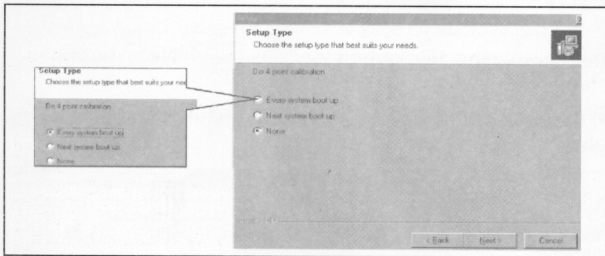


(Figure 12)

Press "Next" button, then enter the check box. (see figure 13-14)

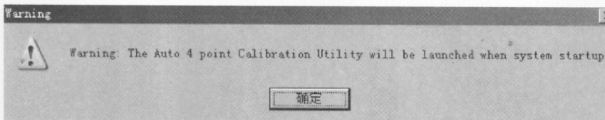


(Figure 13)



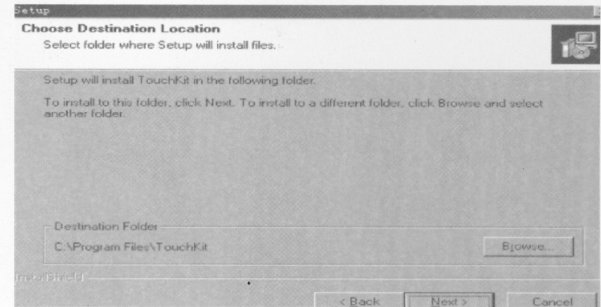
(Figure 14)

Press "Next" button again, then it will appear warning box menu. (see figure 15)



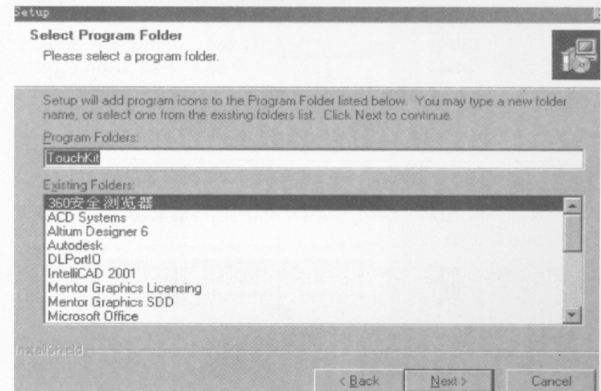
(Figure 15)

Then press the "Enter" key twice. It will appear the destination location box. (see figure 16)

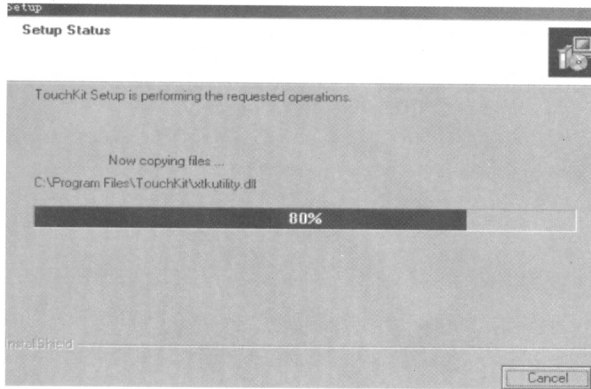


(Figure 16)

After choose the destination location, click "Next" button to enter setup interface (see figure 17-18).

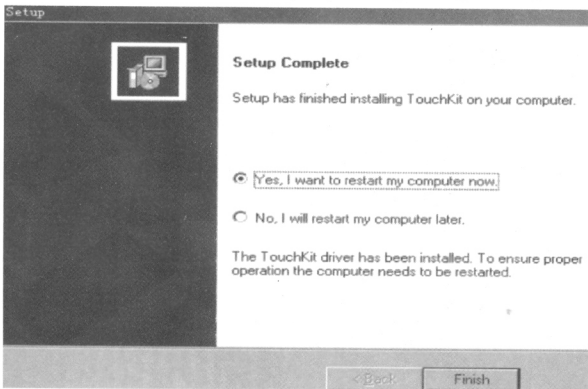


(Figure 17)



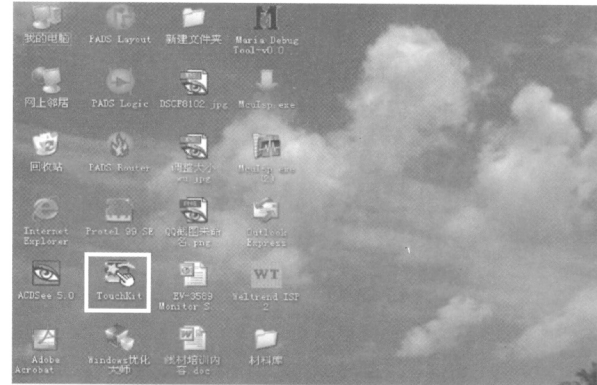
(Figure 18)

Then it will appear the interface as blow(see figure 19)



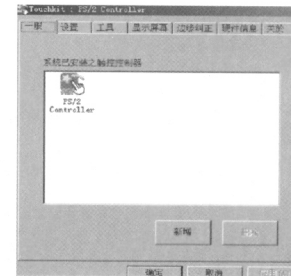
(Figure 19)

Click "Finish" button to finish the installation. Then the computer will be re-started. At the same time there is a Touchkit icon on the screen (see figure 19).



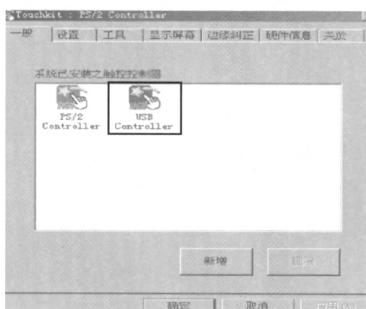
(Figure 20)

(5) Click "TouchKit" icon, then there appears the touch screen setting check box (see figure 21)

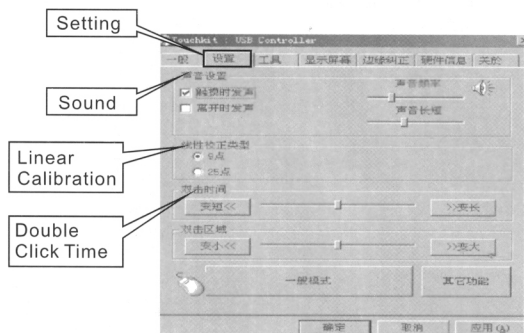


(Figure 21)

If connected with USB cable, it will appear below interface (see figure 22). The user can set sound, linear calibration type, double clicking time and zone, touch mode, and other function in the touch setup check box (see figure 23). (Remark: If there is no USB Controller icon in the pictures. That means the USB is not connected, please reconnect the USB cable)

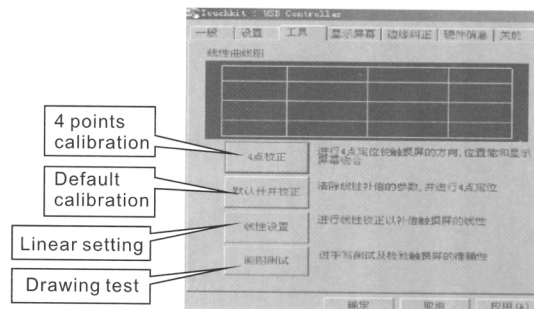


(Figure 22)



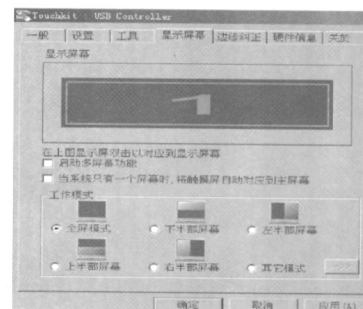
(Figure 23)

In the “tool” check box, use can set below 4 functions as figure



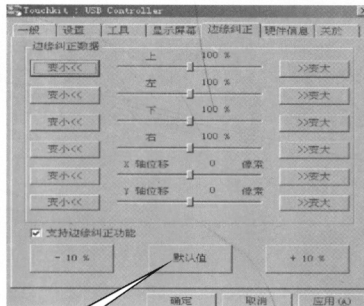
(Figure 24)

User can also set the display screen in display screen check box as below figure (see figure 25).



(Figure 25)

And set the edge correction parameter in edge convection check box as below figure (normally using Default). (see figure 26)



(Figure 26)

Default

6. Specification

- (1) Power supply: DC 9V-16V
- (2) Max current: <1000mA
- (3) System: NTSC/PAL
- (4) IR transmitter frequency range: A(2.3/2.8MHz), B(3.2 /3.8MHz)
- (5) Aspect ratio: 16:9
- (6) Resolution: 800*R.G.B*480
- (7) Work temperature: -20°C~60°C
- (8) Storage temperature: -30°C~70°C
- (9) Dimension: 179×120×22mm

7. Accessory

1. Remote control *1PCS
2. Power cable *1 PCS
3. VGA extension cable *1 PCS
4. User manual *1 PCS
5. Touch pen *1 PCS
6. CD driver *1 PCS
7. Bracket *1 PCS
8. Headrest frame and plastic card * 1 PCS each

8. Cleaning and general maintenance

If your vehicle has been parked in direct sun light resulting in considerable rise in temperature inside the vehicle, allow the unit to cool off before operating.

Clean the unit with a slightly damp soft cloth. Use a mild household detergent, Never use strong solvents such as thinner or benzene as they might damage the finish of the unit.

Cleaning:

Unplug or power off mode before cleaning, Do not use liquid cleaners or aerosol cleaners. Use a damp cloth for cleaning.

Ventilation:

Holes in the cabinet and of the back or bottom are provided for ventilation, and to ensure reliable operation of the monitor equipment by protecting from overheating. these holes must not be blocked or covered

Object and liquid entry:

Never push objects of any kind into this monitor equipment through holes as they may touch dangerous voltage points or short-out parts that could result in a fire or electric shock. Never spill liquid of any kind of product.